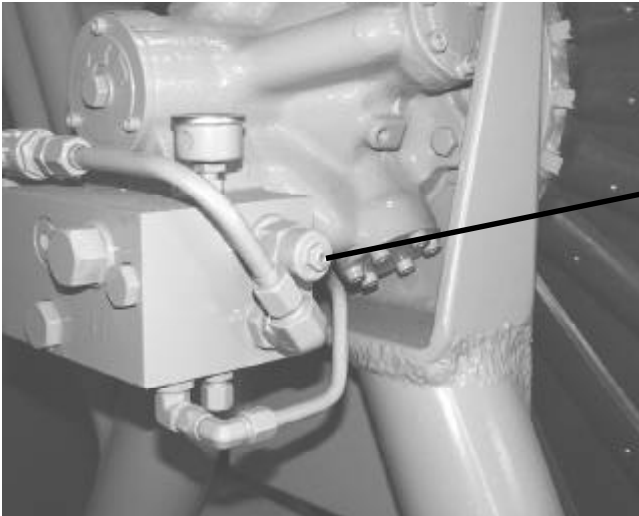


INSTRUCTIONS for adjusting the COUNTER BALANCE CARTRIDGE Used to set desired line tension between linesetter and main spool.



*Counter Balance
Cartridge Adjusting
Screw and Jam Nut*

The **Counter Balance Cartridge** is located on the main spool motor manifold. It controls the amount of line tension between the LS-3 LineSetter and the main spool.

To adjust: Loosen the jam nut and turn the socket head screw with a hex tool.

To **loosen** line tension → Rotate the adjusting screw **clockwise**.

To **tighten** line tension → Rotate the adjusting screw **counterclockwise**.

When desired setting is acquired, **retighten** the **jam nut**.

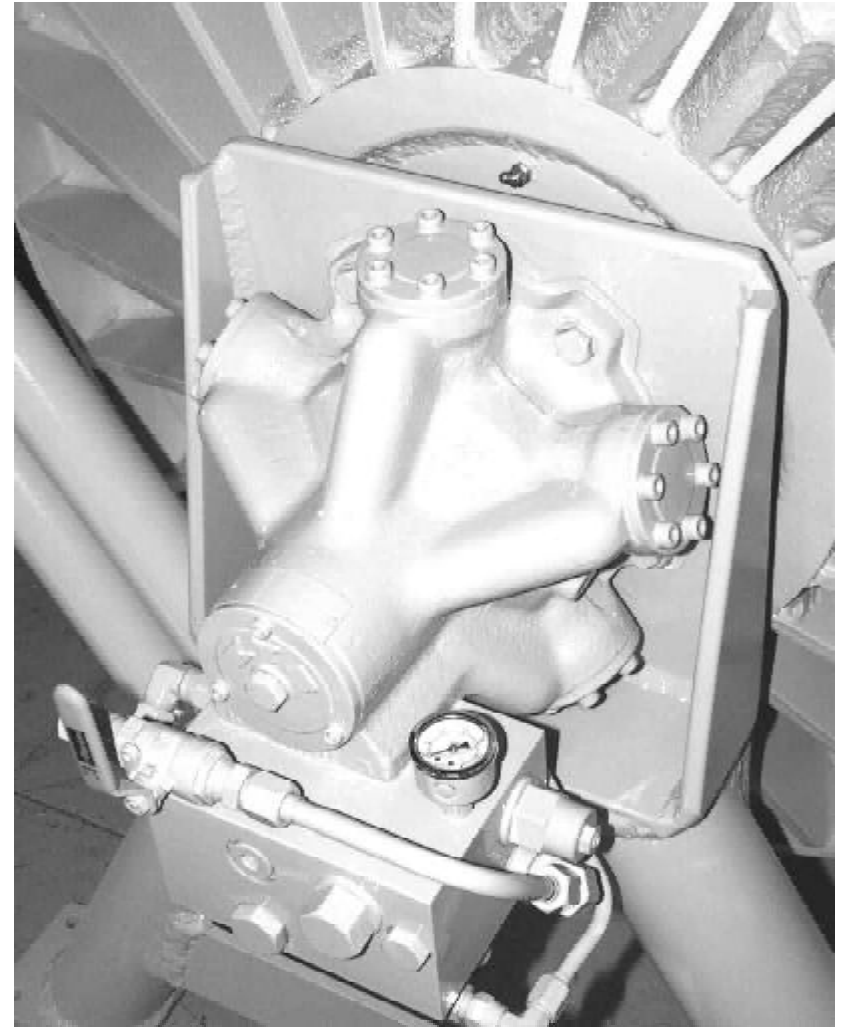
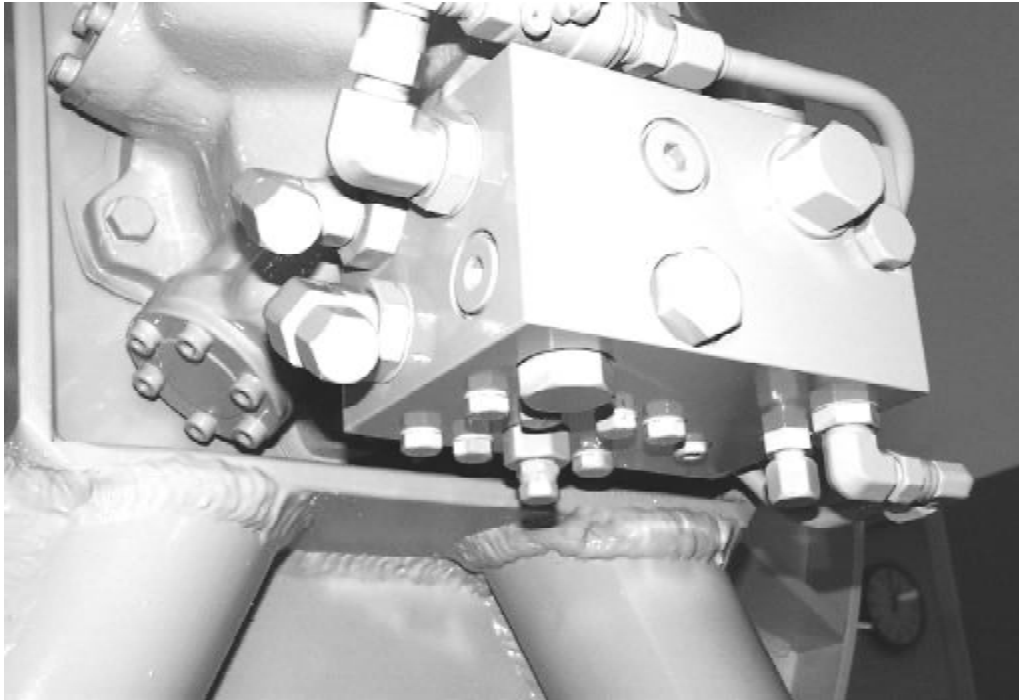
NOTE: This adjustment also controls the hauling power of the reel. To increase power, rotate the adjusting screw counterclockwise, rotating the adjusting screw clockwise decreases power.

NOTE: Some fishermen feel the need to adjust the Counter Balance Cartridge once or twice during a line setting operation, though after a period of time, a single setting should be achieved.



IMPORTANT: Use of the Freespool Ball Valve to further loosen the line tension beyond the Cartridge settings will not damage the equipment, however, by opening the Ball Valve, the stopping feature of the main spool will be partially or totally eliminated if the LineSetter is suddenly shut off.

OLD STYLE MANIFOLD (SERIES II)



OLD STYLE SERIES II MANIFOLD

